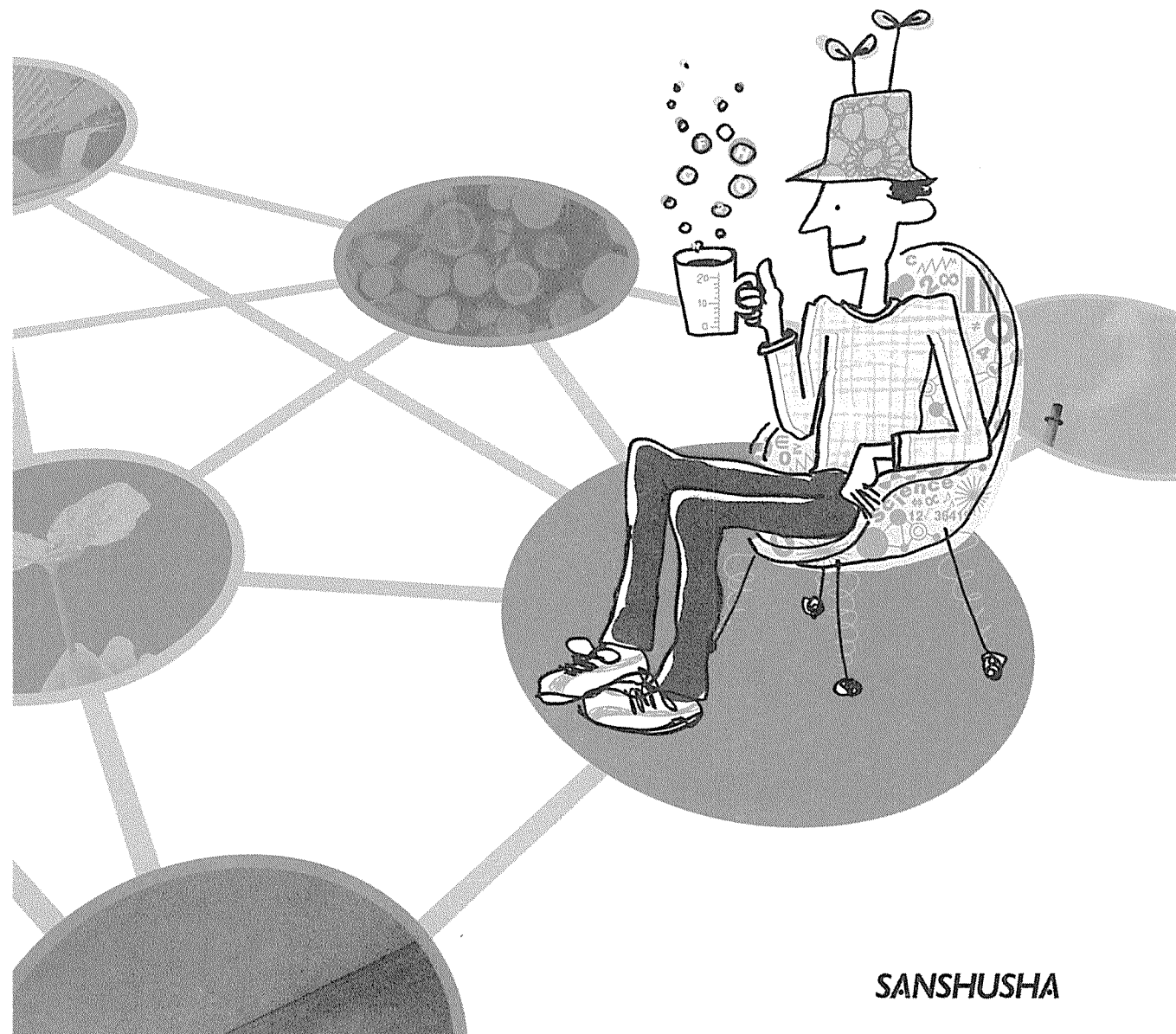


# Science and Our Life Style

Yasuhiro Ichikawa



SANSHUSHA

## は し が き

21世紀に入り、様々な分野で改革が行われている。未来を託す人材育成のための大学教育がクローズアップされ、語学教育もさまざまなニーズに応えるため改革が進められている。しかしながら、学生の語学力は年々下がっているように感じられる。その原因にはコンピュータ、特にコンピュータゲームの普及があげられるであろう。多くの学生は一番言語能力が高まる時期に文字を読み、考えるという作業をしなくなり、なんでもだめならリセットすればいいと思うようになっている。さらに母国語である日本語でさえも自分の思っていることを述べるができないのが現状であろう。

このような状況でも、学生は大学での4年間でさまざまなことを学び、成長していかなければならない。そして、語学も大学合格のための英語ではなく、社会で通用する英語を身につけなければならない。

本書はこのような学生に対して、現在身の回りで起こっている事柄を題材として「生」の英語に触れ、その内容を理解し、さらに自分の言葉でまとめる力を付けるために作成されたものである。

各課はWarm-up、passage、comprehension、exerciseで構成されている。

- ◎ Warm-upは広告やパンフレットから必要な情報を読み取り理解するためのものである。
- ◎ Passageと comprehensionは現代社会で起こっているさまざまな事柄を読み進め、その内容を端的に把握できる能力を養うためのものであり、題材は科学的なものから自分の体に関わるものまで学生が読んでみたくなるようなものを厳選した。
- ◎ Exerciseは実際に日本人が間違いやすい語法を理解するための問題と、リスニングを強化するための問題で構成されている。

題材はできるだけ最新のものを選んだが、原文にはできるかぎり手を加えずに「生」の英語として取り上げたので、単語や表現に通常の用法ではないものも出てくる場合がある。しかし、実際に社会に出れば、書き直されて英文が目の前に出てくるわけではない。従って、学生諸君にはぜひ、さまざまな語法・用法に触れてもらいたい。また、紙面の都合上、英文の量を制限しているので、ご使用される先生方には、さらに関連する教材を使って学生の英語力を磨いていただければ幸いである。

編著者

# CONTENTS

<b>Unit 1</b>	Sun Power Electric's Power Plants	7
<b>Unit 2</b>	Auto safety: A new car seat idea has safety advocates throwing tantrums	11
<b>Unit 3</b>	Yes, You Can Buy This Home Fuel Cell	15
<b>Unit 4</b>	The Ecstasy of Agony	19
<b>Unit 5</b>	Fat sticks around in your bloodstream when you're uptight	23
<b>Unit 6</b>	Chemical senses research: New-car aroma can be hazardous to your health	27
<b>Unit 7</b>	Innovative Technology in Architecture	31
<b>Unit 8</b>	Engineering: A design by da Vinci bridges 500 years	35
<b>Unit 9</b>	Key Reflexology - 1	39
<b>Unit 10</b>	Key Reflexology - 2	43
<b>Unit 11</b>	Colour Therapy	47
<b>Unit 12</b>	Music Therapy	51

# Unit 1

## ■Warm-Up■

### Travel Information



Tour Operator (Travel Contract)

Type Hotel + tour of the city + medieval dinner + a flight in a balloon

Country Italia (arte e cultura)

Detailed Information

Nights 2

Price for Person 315.00

Treatment HALF BOARD - Beverages not included

Included

- Two overnights at three stars hotel situated close to Siena's historic center. Accomodation in a double room, with breakfast.
- Guided tour in Siena.
- Medieval dinner
- Flight by montgolfier
- Dinner at the hotel (drinks not included)
- Transfers with hotel's means of transport

Not Included

- Drinks, extras, tips and what is not mentioned by "The rate includes"

Information

Package tour valid on F, S, S for 2002 for a minimum of 6 persons

設問 1 このツアーではどんなことができるのか？

設問 2 何泊するのか？

設問 3 ツアーは何人以上で実施するのか？

## Sun Power Electric's Power Plants

Track 1



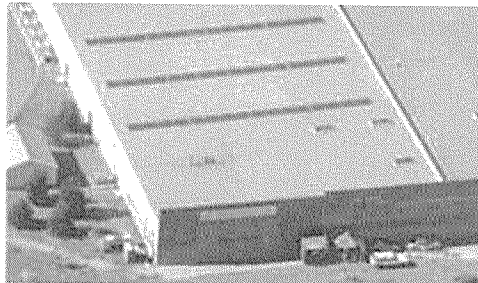
ReGen is electricity made from renewable and clean energy resources like the sun and landfill gas that's then delivered to the New England power grid.\* Our solar power plants, located on the roofs of BJ's Wholesale Clubs and IKEA stores, produce this clean electricity without any emissions. Our landfill gas plant generates electricity from organic wastes and is sited alongside the landfill in North Attleboro, Mass.

And we're probably the only power company on the planet that shows you how our plants are operating on a daily basis (see below)!

### Solar Power Station: BJ's Wholesale Club, North Dartmouth, MA

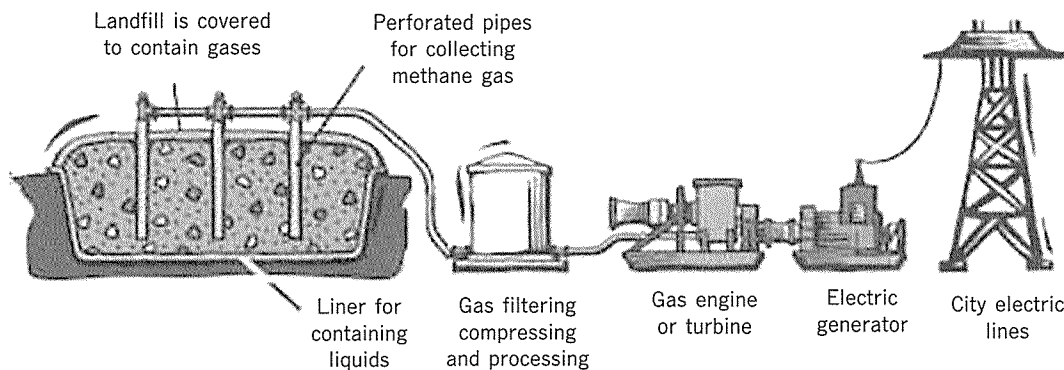
Our first solar electric station is a 15 kW photovoltaic\* system consisting of 52 solar panels manufactured by ASE Americas, Inc.\* of Billerica, MA and 16 panels manufactured by Evergreen Solar of Waltham, MA. The system began operating in December 1998, and generates approximately 19,500 kWh of electricity per year. Over its lifetime, this installation will prevent approximately:

- 1,014 lbs. of nitrogen oxide\* which produces smog
- 3,260 lbs. of sulfur dioxide\* which creates acid rain
- 578,760 lbs. of carbon dioxide which contributes to\* global warming



### Landfill Gas Station: North Attleboro, Massachusetts

Our landfill gas power plant works by collecting methane gas from the landfill, burning it in an engine which turns a generator and makes electricity. The methane gas is generated by decomposing\* organic matter in the landfill, and it would otherwise be wasted if we didn't use it to make electricity. The landfill gas power plant actually improves the environment by capturing and burning the methane, a known greenhouse gas.



(注)

grid 高压配線網 photovoltaic 光電池の ASE Americas, Inc. ASEアメリカ社 nitrogen oxide 窒素化合物  
 (Nox) sulfur dioxide 二酸化硫黄 contribute to ~の原因となる decompose 分解する

## Comprehension

Passageの内容に合うように空欄に適切な語句を入れなさい。

ReGenとは：

2つの発電所：

(1) 太陽光発電所

にある。

に稼働を開始。

年間を発電。

利点：

など

(2) ゴミ処理施設から発するガスによる発電所

にある。

発電方法：を燃やして、

を稼働して電気をつくる。

利点：

## Exercise

**A**

次の文で誤りがあれば、その部分を訂正しなさい。

1. I would appreciate if you could respond quickly.
2. She was opposed to set up a dictatorship.
3. They had no intention to keep their words.
4. I am looking forward to receive your reply.
5. She is capable to run 1500 meters in under four minutes.

**B**

音声を聴いてその内容に最も近い英文を次の(a)~(d)から選びなさい。

Track 2



1	(a) Ms. Matsuzawa spent \$20. (b) Ms. Matsuzawa paid too much. (c) Ms. Matsuzawa saved \$16. (d) Ms. Matsuzawa saved \$4.
2	(a) The man is a lawyer. (b) The man is a writer. (c) The man is a teacher. (d) The man is a businessman.
3	(a) He forgot to meet us. (b) We took him to the airport. (c) No one met him because it was short notice. (d) He was very considerate to meet us.
4	(a) The sisters looked alike. (b) The women looked alike, but they are not sisters. (c) They didn't look alike even though they were sisters. (d) They didn't look alike because they were not sisters.
5	(a) Now she takes one tablet. (b) Now she takes three tablets. (c) Now she takes two tablets. (d) Now she takes four tablets.

# Unit 2

## ■Warm-Up■

### The Festival City from \$899

Hong Kong is called the "City of Life" because it exudes a zest for life. The very air is charged with energy and exuberance. Hong Kong's unique fusion of East and West exhilarates. Its melange of modernity and antiquity captivates, from sacred temples to soaring skyscrapers. Added to this, the city's colorful markets beckon you with bargains. And over 10,000 restaurants entice you with cuisine from around the globe. Nighttime provides myriad dazzling diversions. What's more, unprecedented values make this magical metropolis even more attractive. Hong Kong awaits you. Now is the perfect time to take the trip of a lifetime in the "City of Life."

#### Included Highlights

- Round trip airfare from select West Coast gateways to Hong Kong
- 5 nights accommodation at Hotel A
- Airport-hotel round-trip transfers

#### Price & Departures

Opt. Daily Breakfast	Hotel A			Hotel B			Hotel C		
	Twin	Single	Triple	Twin	Single	Triple	Twin	Single	Triple
	\$87 per person			\$133 per person			\$187 per person		
April	997	1273	997	1344	1967	1344	1225	1733	1225
May	899	1087	899	999	1276	999	1380	2037	1380
June	1083	1267	1083	1177	1456	1456	1410	1913	1410
July	1263	1447	1263	1357	1636	1636	1590	2093	1590
August	1263	1447	1263	1357	1636	1636	1590	2093	1590
September	960	1183	960	1044	1347	1044	1400	2057	1400
October	1147	1553	1147	1364	1987	1364	1400	2057	1400
Nov 1-16	1147	1553	1147	1364	1987	1364	1400	2057	1400
Nov 16-Dec 12	899	1136	899	999	1300	999	1200	1707	1200
Dec 13-26	1140	1363	1140	1224	1527	1224	1425	1933	1425
Dec 27-Feb 28 2003	899	1136	899	999	1300	999	1200	1707	1200
Mar 2003	940	1163	940	1024	1327	1024	1225	1733	1225

設問 1 香港は何と呼ばれているのか？

設問 2 呼び物として何がついているのか？

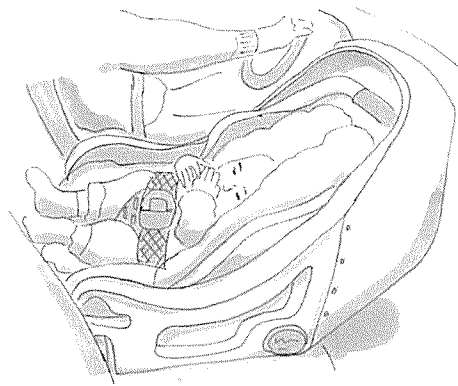
設問 3 10月に1人で行きたいが、朝食付きで最低いくらかかるか(税金は除く)？





## Auto safety:

A new car seat idea has safety advocates throwing tantrums\*



How controversial\* is the new car seat from Xportation Safety Concepts Inc. (XSCi)? When a representative of the National Highway Transportation Safety Administration\* (NHTSA) heard that we had no editorial\* position on the thing, he was livid\*. “Shame on you!\*” thundered Tim Hurd. “Why wouldn’t you take a position against injuring or possibly killing a child?”

The roots of this controversy go back to the mid-1990s, when it became clear that airbags could harm infants. Since then, all car seats have been designed for use in rear seats. Problem is, some 31,000 drivers crash each year because of distractions\* from passengers — such as an infant crying in the back. With this in mind, XSCi has designed what it claims is an airbag-compatible car seat. The seat consists of a removable infant cradle\* shock-mounted to\* a frame that slopes\* up and outward like a helmet. Foam is said to absorb crash energy and transfer it to the automobile seat cushion. Independent tests show the seat exceeds the federal government’s stringent\* Child Restraint Air Bag Interaction criteria.

But Werner Freitag, a child safety engineer with Consumers Union, found demonstrations of the product “very disconcerting\* ... The airbag gases around the dummy’s head. That’s OK for a dummy, but not for children.” “We don’t believe that’s a concern,” counters\* XSCi engineering manager Dave Clement, who says he would cheerfully place his own daughter up front in the seat.

He’d better hold off\*. Current law requires all safety seats to carry labels stating they should not be placed in front of airbags. NHTSA threatens to raise “serious legal questions” should XSCi publicly suggest theirs be used up front.

“It’s going to be a tough road,” Clement admits.

(注) \_\_\_\_\_

tantrum かんしゃく、不機嫌    controversial 論争を引き起こす    Highway Transportation Safety Administration  
 高速道路交通安全局    editorial 論評をする    livid 青ざめた    Shame on you! みっともない、恥を知れ    distraction  
 気を散らすこと    cradle ゆりかご    shock-mounted to～ ～に衝撃吸収装置 (ショックアブソーバー) が取り付け  
 られた    slope 傾斜する    stringent 厳しい    disconcerting 当惑させるような    counter 反対する  
 hold off 延ばす

## Comprehension

Passageの内容に合うように空欄に適切な語句を入れなさい。

チャイルドシートに関する論争の原点：  年代半ば

：

この結果、チャイルドシートは

問題点：

ここからできあがったのがXSCi社のチャイルドシート

特徴は：

この製品の問題点 (1)：

(2)：

## ■ Exercise ■

**A**

次の文で誤りがあれば、その部分を訂正しなさい。

1. They planned on closing the factory in Yokohama.
2. Members of the public were prohibited to feed the animals.
3. She is commonly regarded to be one of Canada's best musicians.
4. She is not justified to make these allegations.
5. He is responsible to market the full line of the company's pharmaceutical products.

**B**

音声を聴いてその内容に最も近い英文を次の(a)~(d)から選びなさい。

Track 4



1	(a) I would like some orange juice now. (b) I like orange juice, but I don't want any now. (c) I never want orange juice again. (d) I am never tired of orange juice.
2	(a) He is at a bank. (b) He is at a restaurant. (c) He is at a grocery store. (d) He is at a post office.
3	(a) It was not late when we called you. (b) It was late, so we didn't call you. (c) It was late, but we called you. (d) It was not late, but we didn't call you.
4	(a) We arrived after two o'clock. (b) We arrived just as the game began. (c) We arrived in the middle of the first half. (d) We arrived too late for the game.
5	(a) Takashi and Akira do not like each other. (b) Takashi and Akira are friends. (c) Takashi always takes Akira along with him. (d) Takashi and Akira are well.